



Melva Campbell Park Plan

March 23, 2021

Fellow Citizens:

Working with the nationally-recognized park design firm Spaces for Play, **the Golf & Parks Committee has finalized a preliminary master plan for the city's first true park, Melva Campbell Park.** The plan incorporates many of your ideas and requests from our prior survey responses and town hall meeting, as the plan utilizes the city's history with NAS JRB Fort Worth with an aviation theme running throughout the park.

As we move toward final approval and actual construction of the park, once again the city desires your input and thoughts on what you want to see in your park.

Inside this flyer, you will find a map of the current master plan, and on the back you'll also find photographs of the potential equipment from each area of the park, including the completely custom airplane and control tower playground structures.

You will also find a survey and a self-addressed postage-paid envelope. Please give us the benefit of your thoughts and return the survey by mail, in person at city hall, or by email to bbarrett@cityofwestworth.com, no later than **April 9th**.

Further, we will hold a public workshop at city hall on **April 22nd** at **6:30 PM** with Sara Kreiss from Spaces for Play present to answer your specific questions. At the workshop, the city council, the committee, and Ms. Kreiss will all receive your input prior to finalizing the park's plan, with an eye toward a grand opening in mid-autumn.

I know all of us look forward to your thoughts and ideas, as we together build a city park that will become the heartbeat of our town, and a communal space that will be enjoyed by Westworth Village citizens for generations to come.

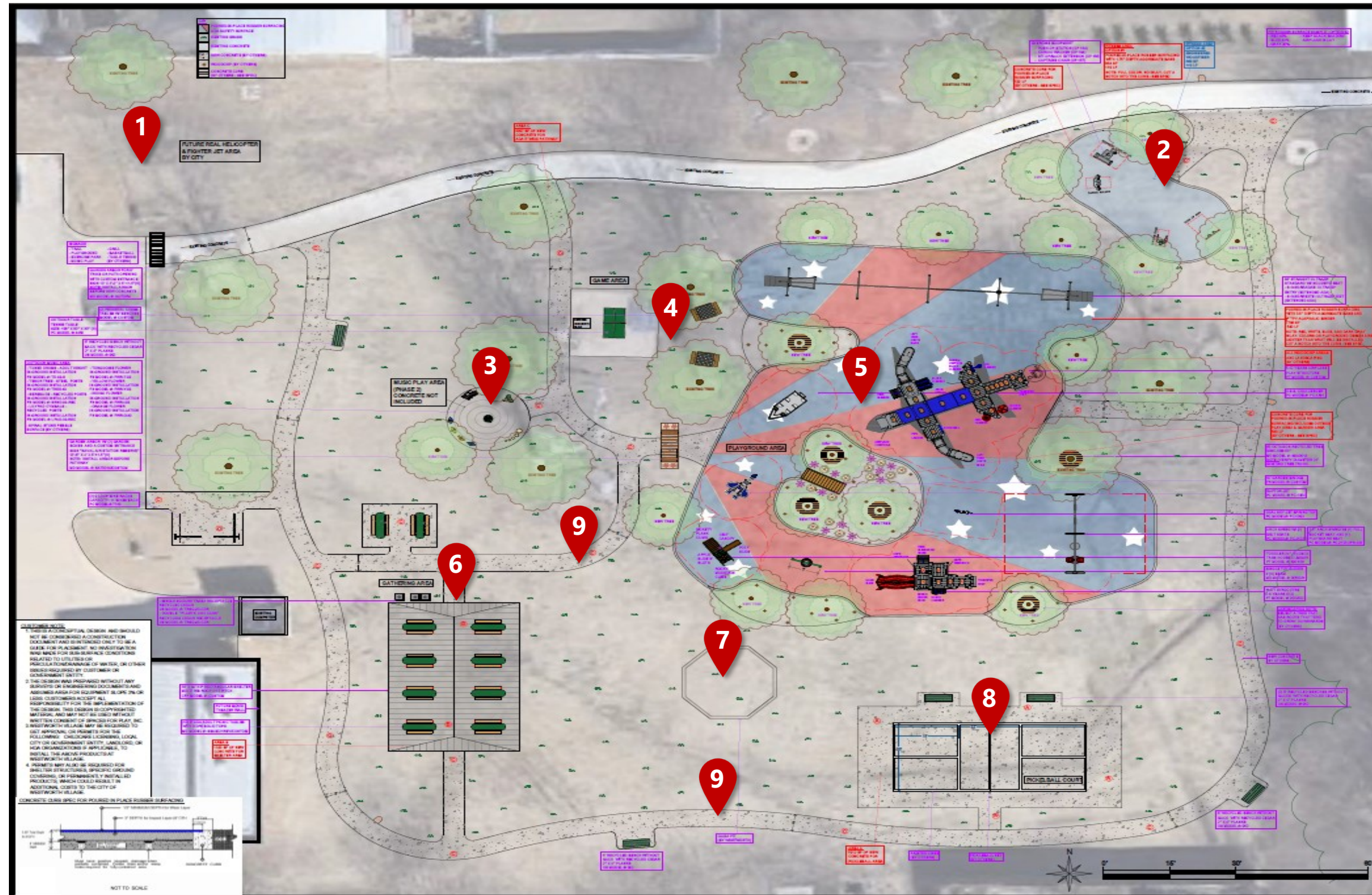
Respectfully,

Mayor Kelly Jones



Melva Campbell Park Current Master Plan Map

(to be located in the green space behind City Hall)



Proposed Areas and Equipment

1 Welcome Area

- Decommissioned helicopter and plane from NASJRB
- Area history

2 Exercise Area

- Push-Up Station
- Sit-Up/Back Extension
- Captains Chair
- Cardio Walker

3 Music Area

- Flower Instruments
- Lilypad Cymbals
- Tuned Drums
- Tenor Tree
- Serenade

4 Game Area

- Table Tennis
- Chess/ Checkers Table
- Giant Gameboard

5 Playground Area

- Double Bay Swings (including "mommy & me" swings)
- ADA Accessible UltraZip Zipline
- Spring Riders
- Airplane Play Structure (5-12 Years)
- Control Tower Play Structure (2-5 Years)
- Toddler Play Structure (12-24 Months)

6 Pavilion

- Picnic Benches
- Pedestal Grill

7 Gaga Ball Pit

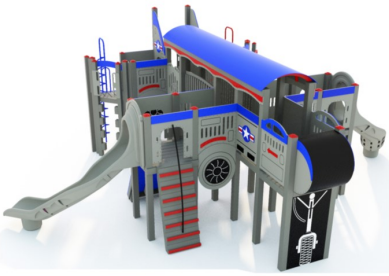
8 Pickleball Court

9 Walking Paths

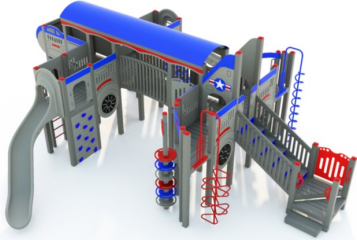
(Design provided by Spaces for Play, Inc.)

Playground Area

Airplane Structure



Control Tower Structure



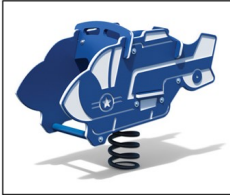
U.S.S. Challenger



Dual Sky Jet



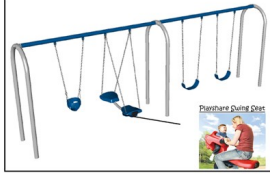
Optional: Toddler Helicopter



Octagon Tree Bench



Double Bay Swing



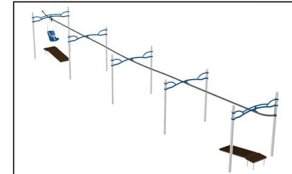
10ft Arbor w/ Flower Boxes



Raptor Jet



ADA Accessible UltraZip



10' Garden Bridge



Tree House - Front



Tree House - Back



Single Tot Glider



Exercise Area

Exercise Area



Exercise Area - Optional



Horizontal Chin-Up



Leg Press

Push-Up Station



Sit-Up/Back Extension



Captain's Chair



Cardio Walker



Music Area

Flower Instruments



Lilypad Cymbals



Tuned Drums



Tenor Tree



Serenade



Game, Pickleball, and Gathering Areas

Recycled Bench w/o Back



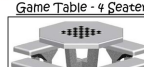
Table Tennis



Game Table - 2 Seater



Game Area - Optional



Game Table - 4 Seater



Giant Game Board



Pedestal Grill



Rectangular Shelter



ADA Picnic Table



Double Recycling Receptacle



Entry Area



Arbor



Pavilion

